

SIMPLE WESTERN CERTIFIED ANTIBODY DATASHEET

[View Antibody Link](#)

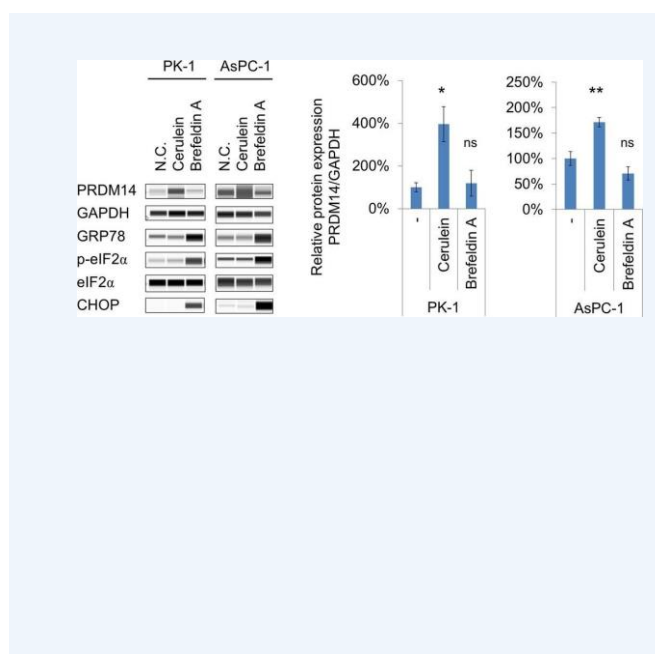


Figure: PRDM14 expression in pancreatic cancer cell lines. Pancreatic cancer cell lines, PK-1 and AsPC-1, were treated with cerulein and ER stress inducer brefeldin A. Expression levels of PRDM14, GAPDH, GRP78, eIF2α, phospho-eIF2α, and CHOP in the cells were analyzed using Wes capillary electrophoresis system. GAPDH was used as a loading control. Expression levels of PRDM14 protein were normalized to that of GAPDH and plotted as fold changes relative to control. Error bars represent the mean ± SD of triplicate samples. Student's t-test: **P < 0.01, *P < 0.05, ns, not significant.

PROTEIN TARGET/ANTIBODY	
Protein Target	CHOP (L63F7)
Protein Isoform	
Antibody Type	Primary
Host Species/Clonality	Mouse Monoclonal
ASSAY	
Sample Type	AsPC-1, PK-1
Sample Concentration	Not_Stated
Antibody Concentration/Dilution	Not_Stated
Antibody Diluent	
Detection Mode	
Separation Type	Size
Matrix	
Observed kDa	

*Image collected and cropped by CiteAb from the following publication <https://onlinelibrary.wiley.com/doi/abs/10.1002/2211-5463.12519> licensed under a CC-BY license

PUBLICATIONS

1. Moriya, C., Imai, K., et al. PRDM14 is overexpressed in chronic pancreatitis prior to pancreatic cancer. FEBS Open Bio. 2018 Oct;8(10):1733-1741. 10.1002/2211-5463.12519. PMID:30338223.
- 2.
- 3.
- 4.
- 5.
- 6.

This antibody is validated for Gel-Free, Blot Free, Hands Free Simple Western Systems. To learn about Simple Western Systems, available Simple Western antibodies, or new antibody submissions visit the links below. For additional information, please contact support@proteinsimple.com.

[Simple Western Systems](#)

[Simple Western Antibody Database](#)

[Simple Western Antibody Submission](#)

PAGE 2/2

bio-technne[®]

bio-technne.com

Global info@bio-technne.com bio-technne.com/find-us/distributors TEL +1 612 379 2956
North America TEL 800 343 7475 **Europe | Middle East | Africa** TEL +44 (0)1235 529449
China info.cn@bio-technne.com TEL +86 (21) 52380373

Trademarks and registered trademarks are the property of their respective owners.